

Institution of Railway Signal Engineers Australasia  
Permanent Way Institution NSW

# Technical Meeting



**IRSE**  
INSTITUTION OF RAILWAY  
SIGNAL ENGINEERS  
AUSTRALASIA



Thursday 22nd June 2017 at 5.00pm

Sydney Masonic Centre, 66 Goulburn Street, Sydney



*WSP is one of the world's leading engineering professional services consulting firms. We are dedicated to our local communities and propelled by international brainpower. We are technical experts and strategic advisors including engineers, technicians, scientists, planners, surveyors, environmental specialists, as well as other design, program and construction management professionals.*

*We design lasting Property & Buildings, Transportation & Infrastructure, Resources (including Mining and Industry), Water, Power and Environmental solutions, as well as provide project delivery and strategic consulting services. With 2,500 talented people in 22 offices across Australia and New Zealand, we engineer projects that will help societies grow for lifetimes to come. [www.wsp.com](http://www.wsp.com)*

## The June joint PWI and IRSE technical meeting is proudly sponsored by WSP

### **PWI:** Efficient tunnel assessment

Stuart Allabush; Principal Permanent Way Engineer, WSP

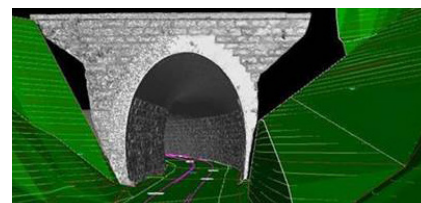
Mark Butler; Principal Rail Systems Analyst, WSP

With the introduction of new rolling stock and the installation of new systems within rail tunnels there is increased demand in determining appropriate clearances. Traditional methods are well known but are often time consuming.

Stuart Allabush and Mark Butler of WSP (formerly Parsons Brinckerhoff) will present different approaches to assessing tunnel clearances in a more efficient manner.

The discussion will include data capture and processing, the build-up of rolling stock kinematic envelopes and the assessment of results.

WSP has been developing visualisation systems to aid in the communication of the findings and examination of alternative designs.



### **IRSE:** Signalling design, an interactive digital experience

Kaniyur Sundareswaran; Technical Director, Aurecon

Seamus Murphy; Technical Director & Sam Shepherd, Visualisation Senior Specialist, Aurecon

Kaniyur Sundareswaran, Seamus Murphy and Sam Shepherd will present on the opportunities that have come from usage of 3D models in the signalling discipline with application to both greenfield and brownfield projects.

3D modelling enables the design of signal positions before OHW and CSR is installed, and taking into account existing and proposed structures as well as undertaking preliminary signal sighting using virtual models.

The meeting will conclude at 6.30pm, please join us for networking drinks and finger food following the meeting

**Please RSVP Natalie-eve Gambell at [info@pwinsw.org.au](mailto:info@pwinsw.org.au)**